

2016 Annual Report



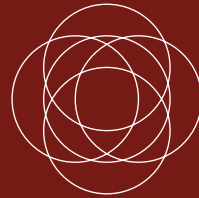
**COMMUNITY
FOUNDATION**
of Western Nevada

Care • Connect • Engage
Connecting people who care with causes that matter.



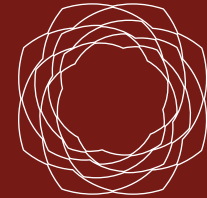
Care

We work together
to build a more close
knit, more livable, more
lovable community.



Connect

We bring the right people
together with the best
intentions on serving our
community, fostering even
bigger opportunities.



Engage

We are actively involved
as a solutions-minded
partner, seeking results
that are beneficial to all.

Table of Contents

Letters from Board Chair and President/CEO3-5

The Community Endowment 6

100% Giving Board Award..... 6

2016 Funds.....8

Donors 14

Legacy Society 16

Scholarships 18

Partnership Grants 22

Initiatives 26

Community Education 28

Corporate Philanthropy Partners 30

Board of Trustees 32

Advisory Board 33

Professional Advisor Council Members..... 34

Community Foundation Staff..... 34

Financials..... 35

Looking Forward 39

*Jim Pfrommer,
Chair, Board of Trustees,
Community Foundation
of Western Nevada*



A strategic plan for the 'big tent of good things'

As I complete my first year as Chair of the Board of Trustees, I continue to learn of, and be amazed by, all the projects managed and coordinated by the staff and Board of the Community Foundation of Western Nevada. I often describe the Community Foundation as a, 'big tent of good things.'

Because of the multitude of projects and opportunities that flow through the Community Foundation offices, a strategic plan was developed in early 2016 to help prioritize them. This plan has been very useful in guiding a cohesive message to staff and Board alike. It also serves to improve the delivery of our core mission: improving our community through promoting philanthropy and being a community leader.

In addition to promoting philanthropy in our region, the initiatives (Homeless Youth and Caregiver Support, currently) are a very positive contribution to the betterment of our communities and have earned the Community Foundation the well-earned title of being the community's neutral convener on major issues. I like to say that while the Community Foundation is a nonprofit with budgetary needs, all our work is really about our community. This annual report reflects the community's great work in partnership with the Community Foundation. Enjoy and take pleasure in how you are helping.

Thank you,

A handwritten signature in black ink that reads "Jim Pflumer". The signature is written in a cursive, flowing style.

*Chris Askin, President
& CEO, Community
Foundation of
Western Nevada*



Rowing in unison — A look back at 2016

While we are well into 2017, I'm still catching my breath from the Community Foundation's explosive growth in 2016.

How explosive?

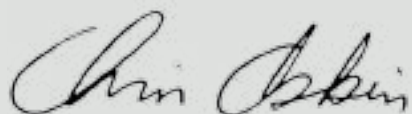
- We doubled our gifts received to \$21,048,000.
- Community Foundation assets grew by more than 20%, topping out at \$92,630,000.

You can see all the numbers on page 35 of this report, but suffice it to say, we are firing on all cylinders.

2016 was our first full year in our new office, our second year under Board Chair Tom Hall's leadership, and was outstanding in terms of our staff additions, community initiatives, leadership activities, and board expansion. It also was a year of tremendous growth for me personally, as we responded to suggestions from hundreds of participants in our strategic planning process and launched a five-year plan in July. The last six months of the year were the most productive in our history, as all staff and board rowed in the same direction on clear strategies and deliberate measurable tactics to accomplish our goals — the community's goals.

We employed new ways of engaging the public and donors, and new ways of communicating with the community. We embraced and supported efforts in the community led by others and added our own twist on support. We developed new ways of building charitable support now and for the future. We reached far to the east and established our first affiliate fund — the Community Foundation of Elko County — and we're exploring more such support to our friends in other rural communities. Staff engaged in new team building work, which was important as we welcomed four new team members in 2016.

Our credo is to Care, Connect, and Engage. Our team is our staff, board, donors, fund holders, grantees, elected officials, opinion leaders, stakeholders in a multitude of areas, and you! Please enjoy the wonderful stories and achievements of impact you see on the following pages, and consider giving us a call. You can make the Foundation even stronger and more impactful by joining with us!



CARE

When we give together, we can transform an entire community.

As this community's expert resource on charitable giving, the Community Foundation of Western Nevada connects philanthropic citizens with the causes they care about to make positive and effective change possible. The Community Foundation creates charitable giving solutions to meet the specific goals and interests of the giver.

The Community Endowment — A resource for a brighter tomorrow

Community gifts, when combined over time with our neighbors' and friends' gifts, create an invaluable resource to meet pressing community needs. These gifts help us in times of crisis and enable us to address persistent community challenges that require both time and money to solve. Through the Community Endowment, the Community Foundation of Western Nevada is enabling all of us to leave a lasting mark on the place we love and ensure it continues to thrive.

Growing the Community Endowment

In 2016, the Community Foundation conducted a feasibility study with the Alford Group for a campaign to raise the money required to further seed the Community Endowment. In September 2016, the Board of Trustees changed the gift acceptance policy to give fund holders the option to contribute a fixed amount or a percentage from their funds to the Community Endowment.

100% Giving Board Award — Leading by example

Launched in 2008, the 100% Giving Board Award recognizes organizations that have received personal monetary contributions from every trustee on their Board. In 2016, the Community Foundation recognized 93 organizations, including our Board, with the 100% Giving Board Award, distinguishing them as exemplary and generous leaders in the field of philanthropy. See nevadafund.org for the complete list.

My Journey Home, Inc — 100% Giving Board Award Recipient

Each year, thousands of inmates are released from prisons and jails in northern Nevada without guidance or resources to help them transition back into society. My Journey Home provides these ex-felons with that desperately needed support. 100% of the My Journey Home Board showed their commitment to the organization and mission by making personal gifts.



COMMUNITY FOUNDATION 100% GIVING BOARD AWARD

93

NONPROFITS

1,167

COMMUNITY
BOARD MEMBERS

\$2,549,808

IN DONATED FUNDS

2016 Funds — Growing resources make positive change possible

In 2016, 23 new charitable funds were established through the Community Foundation of Western Nevada. We administer a variety of fund types to meet the goals and needs of our community givers. An example of each fund is noted in the following pages.

Community Foundation Funds

Community Endowment

Supports our mission to meet the needs of northern Nevadans, forever

Community Foundation Operating Fund

Supports all core expenses, including community leadership activities

Partnership Grantmaking Fund

Supports the Community Foundation's annual competitive grant program for nonprofits doing vital and often unrecognized work in the community

Be Instrumental Arts Endowment

Provides a permanent source of revenue for operating support, capital improvements, creation of new works, and continued access to the arts by all residents and visitors

Youth Network Initiative Fund

Supports projects of the You'N-I Youth Network Initiative aiding homeless and at-risk youth



Lucille Nelson Lindsay Fund was established last year by Bill Lindsay in memory of his wife Lucille Nelson Lindsay. Lucille attended the University of Nevada, Reno and earned a degree in physical education in 1956. She was a gifted athlete and accomplished educator as well. The Lucille Nelson Lindsay fund supports girls' sports at Washoe County middle and high schools, and sports education and women's sports at the University of Nevada, Reno.

Donor-advised funds

Funds established by individuals, families, and organizations where a donor decides where and when to recommend grants.

Alderman Family Charitable Fund
Chris and Ann Askin Charitable Fund
AVANZAR Charitable Foundation Fund
Jack and Jane Becker Charitable Foundation
Bergmann Family Fund
Charles E. Bertolina Charitable Trust
Berry Family Charitable Fund
Bingham Charitable Fund
Charney 1996 Trust Charitable Fund
City of Reno Charitable Foundation
Shari Chase Fund
Barbara B. Clarke Family Fund
Clontz-Howard Charitable Fund
Coast to Coast Foundation
Crone's Coin Charitable Fund
Dees Family Charitable Fund
Shayne Del Cohen Charitable Fund
Denzler Family Charitable Fund
Jessica Satre Diss Charitable
DLL Charitable Fund
Eagles' Wings Struve Family Fund
EWB Fund
Family Court Judicial Benevolent Fund Foundation
Fredricksen Green Foundation
Freedom Charitable Fund
Mark and Clemencia Glenn Foundation
Great Basin Exploration Center
Hall-Prescott Family Fund
Hinderks Family Foundation Fund
K&K Grimm Family Fund

Kassity Family School Fund
Brian and Nancy Kennedy Foundation
Jack and Shanaz Langson Fund
Laurenson Family Fund
Legacy of Grace Foundation
Terri & Gray Levy Charitable Fund
Richard P. Lewis Family Foundation
Lucille Nelson Lindsay Charitable Fund
Lurie and Vogelsong Charitable Fund
Lurieland Foundation Fund
Lutheran Church of the
 Good Shepherd Capital Campaign Fund
Lutheran Church of the Good Shepherd Fund
Make a Difference Fund
Allison Satre Manzari Charitable Fund
Robert and Gloria McDonald Family Fund
Linton A. Mollath Family Foundation
Monroe Youth at Risk Family Fund
Mortensen Nevada Historical Trust Fund
Cork Navillus Family Foundation
Nevada Discovery Museum Fund
NEWT Christian Fund
Nichols Family Charitable Fund
Obscure Destinies Charitable Fund
Fred & Cheryl Olson Charitable Fund
Ozmen Foundation
Douglas and Cynthia Petersen Charitable Fund
Steve and Stephanie Petersen Charitable Fund
Patrick D. Pettinari Family Foundation
Thomas Pfrommer Family Fund
Edwin and Judith Pereyra Charitable Foundation
Pokroy Family Reno Fund
Professoressa Charitable Fund
Senator William J. Raggio Charitable Fund

Twentieth Century Club Legacy Endowment *provides grants to Reno and Sparks nonprofits, focused on women, children, veterans, and animals. 2016 grants were awarded to Assistance League of Reno and Sparks for Children in Transition, Washoe Parks Foundation, and provided TMCC scholarships to two women in medical studies.*

Donor-advised funds *continued*

Malena Satre Raymond Charitable Fund
Rebecca's Fund
Reno Central Rotary Club Foundation Fund
RGJ/YPN Twenty Under 40 Initiative Fund
Peter Sterling Satre Charitable Fund
Mark and Carol Steingard Family Charitable Fund
BJ and NL Shipman Family Foundation
Satre Family Fund
Michael and Karren Smith Family Fund
Sullivan and Taylor Charitable Fund
Sullivan and Taylor Family Foundation Fund
Tappan Family Memorial Fund
Tonopah Girl Charitable Fund
Lilli Trincherio Charitable Fund
Vanderleest Family Donor Advised Fund
Victor Charitable Fund
Adam Webster Charitable Fund
Ranson and Norma Webster Foundation
Western Nevada Supply Charitable Fund
Geoff and Sally White Charitable Fund
Emily Jane Wilbanks Memorial Fund
John and Ginny Williamson Charitable Fund
Zonta Club of Greater Reno Fund

Designated funds

These funds support a specific nonprofit organization or mission.

Dixie Bradshaw's Principal Fund
Cristoforo Colombo Lodge 1534 Reno Sons of Italy Fund
Community Aquatics Fund
Family Estate Planning Series Fund
First United Methodist Foundation of Reno
Great Basin Observatory Fund
Immuneize Nevada Fund
Gene and Betty Kopfhammer Fund
Tom and Bennie Livoti Wellness Charitable Fund
Mary's Foundation for Caring
Mustang Heritage Foundation
Maison Ortiz Fund
Maison T Ortiz Family Charitable Fund
Nevada Commission for Women Fund
Raymond C. Rude Supporting Foundation
Raymond C. Rude Designated Fund to Benefit
the US Diving Foundation
Reno Philharmonic Fund
Reno Police Foundation
Retrac Lids Plaza Fund
Senior Support Fund
The David Shaw-Kennedy, III Fund
Sierra Nevada Water Polo, Inc. Fund
St. Paul's Church Berlin, Maryland Fund
Soroptimist International of Truckee Meadows
IGU- Nepal Project Fund
George D. Sullivan Memorial Fund
Tonopah Library Fund
Tonopah Historic Mining Park Fund
David Wallace Legacy Fund
Vanderleest Family Charitable Fund
The Susanne & Gloria Young Foundation Fund



Nevada Commission for Women Fund *Commissioners Anna Thornley, Joetta Brown, Elisa Cafferata, and Brooke Westlake witness Governor Brian Sandoval signing a bill supporting the work of the Nevada Commission for Women Fund, which studies the changing and developing roles of women and recommends legislation.*

Endowments

Endowed funds last forever and may support a specific charity or area of interest.

Dora De Anderson Endowment
Frank Bender Charitable Endowment
Jack Montrose Bobbitt Endowment for Children
Brewery Arts Center Endowment
Community Nutrition Education Endowment
Dangberg Home Ranch Endowment
Friends of Nevada Wilderness Endowment
Evangeline Grant Memorial Music Endowment
Great Basin Outdoor School Endowment
Keep Truckee Meadows Beautiful Endowment
Robert E. Kendall Fourth Ward School Endowment
KNPB Endowment
Mansfield Endowment for the Benefit of the Humane Society
Marilyn R Melton Endowment for the Humanities
May Arboretum Endowment
Eugene Mortara Memorial Endowment
Nevada Land Trust Endowment
Note-Able Music Therapy Services Endowment
Margaret E. Oser Endowment Fund for Women
Reno Chamber Orchestra Endowment
Reno Family Shelter Endowment

Reno Little Theater Endowment
Reno Philharmonic Endowment
Restart Endowment
Safe Endowment
Sage Ridge School Endowment
Sparks Heritage Museum Endowment
Springmeyer Charitable Endowment Foundation
Lilli Trincherio Celebrate Diversity Endowment
Trinity Episcopal Church Endowment
The Veterans Guest House Endowment Fund
The Washoe ARC Endowment
Jim and Karlene Webster Family Endowment
Twentieth Century Club Legacy Endowment
Youth Endowment
Zonta Club of Greater Reno Endowment

Area of interest funds

These funds support a general area of charitable work or a specific population.

Community Foundation of Elko County Endowed Fund
Dream Tags Charitable Fund
Nevada Animal Fund
Thomas Stoker Endowment for Children
Truckee River Fund

Dangberg Home Ranch Endowment

The Dangberg Home Ranch Historic Park preserves an essential chapter in Nevada's history, that of American ranching families. The ranch also houses a fascinating collection of artifacts, photographs, and documents dating from the early 19th century to 1990.

Scholarship funds

These funds help students from preschool to trade school to graduate school.

Alan G. Bain Initiative in Science or Math Award
The Matt Bartlett Memorial Foundation
Jack and Jane Becker College Scholarship
Orville Belding Memorial Scholarship
Boston Family Scholarship
The Peggy Bowker Memorial Scholarship for
Women in Engineering
Kendyl Ruth Williams Depoali Memorial Scholarship
Robert and Judy Dreiling Scholarship
Ezzysgift
Foster Children Education Foundation
Hispanic Heritage Day Nursing Scholarship
Clarence “CJ” Jones Memorial Scholarship
Kennedy Scholarship
Gordon Lymbery PhD Memorial Scholarship
William and Martha Karraker Scholarship Endowment
Tom and Bennie Livoti Saint Teresa of
Avila Endowed Scholarship
The Dieter and Hedwig Meun Endowed Scholarship
General Fred Michel Scholarship
Nevada Veterinary Medical Association Scholarship
Northern Nevada Youth Scholarship
NV Energy Powerful Partnerships Scholarship
Diane Olds Memorial Education Scholarship
Reno & Gloria Quilici Scholarship
Read With Me Scholarship
Reno Central Rotary Scholarship
Philip & Jennifer Satre Scholarship
P & J Satre Medical Education Fund

The Officer Mike Scofield Memorial Scholarship
Serendipity Scholarship
Reno Pops Orchestra Scholarship
Ron & Linda Smith Family Scholarship
Nicole Snyder Memorial Scholarship
Eugene F. and Nadine G. Stegelmeyer Scholarship
John R. Stockman Scholarship
Systems Consultants Scholarship
Tonopah Community Endowment
Claudine Williams Harrah’s Las Vegas Employee Scholarship
Emily Jane Wilbanks Memorial Scholarship
Zonta of Greater Reno Scholarship

Nonprofit organization funds

The Community Foundation manages the money for these organizations’ funds.

Girl Scouts of the Sierra Nevada Agency Endowed Fund
Kidview, Inc. Foundation Agency Fund
Nevada Humane Society Endowed Agency Fund
Nevada Humanities Committee Agency Endowment
Nevada Military Support Alliance Fund
Nevada Museum of Art Agency Fund
RenoCares Fund
Ronald McDonald House Charities, Northern Nevada
Trinity Episcopal Church Endowed Agency Fund
United Way of N. Nevada and the Sierra Donor
Designated Agency Endowment

Charitable gift annuities

A charitable gift annuity that will benefit you or an heir and the charity of your choice can be established with a gift of \$10,000.

Alan G. Bain Initiative in Science or Math Award

A self-described tinkerer, designer, and fabricator, Alan Bain earned college degrees in psychology and general studies. He served as Chief Warrant Officer in the Army and Senior Field Engineer with General Dynamics Corporation and continues to explore the world around him. His eponymous scholarship rewards initiative in science or math.

High School Giving Circle — Engaging youth with philanthropy

Fourteen students from eight area high schools (Davidson Academy, Bishop Manogue, Galena, Hug, Reed, McQueen, Reno and Sage Ridge) handed out \$10,200 in Community Foundation grants in 2016. The annual High School Giving Circle convened a nine-week session during which students researched their charitable interests and heard pitches from local nonprofits before choosing these 11 organizations as grantees:


1. Bridges/Getting Ahead (Food Bank)
2. Child Assault Prevention
3. Drakulich Art Foundation
4. Holland Project
5. Keep Truckee Meadows Beautiful
6. Nevada Youth Empowerment Project
7. Northern Nevada HOPES
8. Note-Able Music Therapy Services
9. OUR Center
10. Step 1
11. Step 2

Northern Nevada HOPES — 2016 High School Giving Circle Grantee

High School Giving Circle grants funds provided supplies for Change Point, Northern Nevada HOPES' syringe services program. Change Point allows people to safely dispose of their used needles and sharps, for free, in exchange for clean ones. Since January 2014, the program has collected more than 360,000 used syringes. In its first year, HOPES saw an 80% return rate on distributed syringes.

"I wanted to go away to college, but now I am seeing the community growing and changing. I feel invested in northern Nevada and want to contribute to this community's change."

– Bella Sloane, High School Giving Circle participant



Former Chief Philanthropy Officer, Tracy Turner led the High School Giving Circle in 2016. Shown here with participant Ming Li Wu.

Donors — Thank you for making our work possible

Our donors are the heart and soul of the Community Foundation — without them we cannot exist, and we cannot serve our community. Thank you for making us and our work possible.

Adams, David M.
Aguirre, Robert
Albrecht, David
Albright, Deane A.
Alderman, Wendy
Amodei For Nevada
Andersen, Michael H.
Anderson, Grant D.
Anonymous
Askin, Christopher and Ann
Associated Wholesale
AVA Logistics LLC
Azad, Roxie and Joseph
Bain, Allen G.
Bancroft-Clair Foundation
Barry University
Becker, Jane Kimberly
Belding, Chad
Bengtson, Sandra L.
Bennett, Ann-Louise
Bergmann, Roger A.
Black, Carina A.
Block, Robert S. Family Foundation
Bogart, Timothy
Borda, Pam
Boston, Donald and Sharon
Boyd, John and Lisa
Boys and Girls Club
Bremer, Marilyn
Brewery Arts Center
Brown, Gay
Brown, Steven R.
California Sierra Express, Inc.
Carpenter, Steve and Linda Kay
Carrick, Steve
Charles Schwab Bank
Charleston, Elinor J.

Children's Cabinet
Christenson, Glenn
Clark, Gere
Clontz, Donna
Community Foundation
of North Louisiana
Council of Michigan Foundation, Inc.
Creekbaum, William A.
Cross, Tyson
Czarnik, Becky
Daane, Leslie C.
Friends of Dangberg Home Ranch
DeGidio, Dean
Denzler, Maria D.
Di Salvo, Arthur F.
Dick, Kevin
Dickson Commercial Group
Dickson Realty
Dickson, Rebecca A.
Diving Board Solutions, LLC
DonateWell
Dooley, John
Drake, Barbara and Ralph
Draper Family Foundation
Dressler, Devere
Dunbar, Regina L.
Duraflex International Corporation
EcoPhones
EDAWN
Elliott, Mendy K.
Ferris, JoAllan
Fey, Christine A.
First Centennial Title
First United Methodist Foundation
of Reno Nevada
Food Bank of Northern Nevada
Foote, Gordon
Frank, Steve
Fredricksen, Eric
Frehner, Garth
Gabrielli, Bob
Gamble, David
Geddes, David L.
Gescheider, Christie
Girl Scouts of the Sierra Nevada
Glenn, Kelly

Gomph, Thomas
Gonzalez, Kelly and Raymond
Gray, Matthew
Grellman, Bonnie and Jack
Growdon Associates
Hager, Robert
Hall, Peggy and Thomas J.
Hall, Thomas E.
Harding-Davis Family
Hass, Edward C.
Hinderks, Larry
Hobson, Harry
Hot August Nights Foundation
Hubbell, David W.
Hulse, James W.
Humphreys, Gail and Rob
Ince, Patricia J.
Isaef, Bill
It's My Community Store, LLC
Jakubowski, Victoria
James, Nora and Bruce
Jarman, Lee
Jewish Communal Fund
Johnny's Ristorante
Johnson, Marc A.
Johnson, Sy
Jones, Honor
Joseph, James F.
Kahr, Patricia D.
Karraker, Perry
Kelly, Joann
Kendrick, Frank
Kennedy, Nancy and Brian
Kenney, John W.
Robert S. and Dorothy J.
Keyser Foundation
Khan, Abrar
Kidview, Inc. Foundation
King, Craig
Klein, Steven S.
Knudson, Sharon
Betty J. Kopfhammer Trust
Ladera Ranch Group, LLC
Lamberti, Steve
Lindsay, William
Lithia Chrysler Jeep of Reno

Livoti, Tom
Lofrese, Daniel L.
Lorton, George E.
Louderback, Sonja and Thomas F.
Lura, Clifford
Lurie, Cary
Lutheran Church of the Good Shepherd
Machine Zone, Inc.
Maiss, Alan S.
Manley, James G.
Marks, Charles
Marlowe, Marjorie Beth
Martinez, Luis
Martinez-Hoffman, Magda
Mathewson, Charles N.
Maupin, Cox & LeGoy
Maupin, Ernest J.
McCulloch, Stacie W.
McKenzie, Lance N.
Melcher, Anne Marie and Kevin
Mentzer, Teresa and Stan
Metler, Larry R.
Meun, Hetty and Dieter
Mollath, Elizabeth
Monroe Schuler Foundation
Moore, Linda
Morgan, Rita M.
Morhart, Susan
Morrill, Robert B.
Eugene Mortara Family Decedents Trust
Mouchou, Robert B.
Moy, Virginia M.
Music Mood Productions
The Nature Conservancy
Nebel, Daria
Neddenriep, Katie
Nevada Land Trust
Newmont Legacy Fund
Nichols, Jane and Jim
Niggli, Michael
Note-Able Music Therapy Services
NV Energy
NV Energy Charitable Foundation
Nye County, Nevada
Olivas, Mike

Olson, Art
Olson, Cheryl and Fred
Ozmen, Eren and Fatih
Peek, Gregory F.
Pennington, Susanne
Pershing County Public Administrator
Pfrommer, Gail and James L.
Phillip Dare Estate
Prescott Famyle, LLC
Primm, Roger
Q & D Construction
Quilici, Gloria M.
Read, Bonnie
Reban, Alicia
Reed, Ben
Reno Air Racing Foundation
Reno Chamber Orchestra
Reno Little Theater
Reno Pops Orchestra
Renown Health
Rice, John Patrick
Rodriguez, Nancy
Ronald L. Olson Foundation
Rose, Patricia
Rotary Club - Reno Central Charter
Raymond C. Rude Foundation, Inc.
Rude-Willson, Janice
Salogga, Michael
Salvation Army - Reno, Nevada
Sanders, Keith
Satre, Jennifer and Phil
Schultz, Vicki P.
Schwab Charitable Fund
Scofield Foster, Sherry
Scutt, Brandon
Sefton, Penny and Don
Sharp, F. DeArmond
Shipman, Nancy and Bruce J.
Smith, Linda and Ron
Smith, Michael and Karren
Snyder, Patti
Sons of Italy
Sorooptimist International of
Truckee Meadows
Sparks Heritage Museum

Special Assistance Fund for Energy
Steingard, Carol and Mark
Steve Wolfson for District Attorney
Stewart, Margaret and Lachlan
Stewart, Susan
Stockman, Dave
Struve, Colleen and Larry D.
Sullivan and Taylor Foundation
Sullivan, Casey
Sutro Residential Group
Systems Consultants, Inc.
Tahoe Fund
Tahoe Rim Trail Association
Texas Roadhouse
Thrivent Financial for Lutherans
TICOR Title of Nevada
Tilford, Dave
Trincherro, Lilli
Truckee Meadows Water Authority
Tscheekar, Nick
Turner, Tracy P. and Jeffrey
Twentieth Century Club
Tyco Integrated Securities
United Way of N. Nevada and the Sierra
University of Nevada
Van Der Wal, Anna Elaine
Vanguard Charitable
Endowment Program
Walker, Janeen L.
Walker, Thomas J.
Wawdo, Sig
Wawona Foundation
Webster, Karlene and Jim
Webster, Norma and Ranson
Welcher, Laura
Wells Fargo Community
Support Campaign
Whitaker, Patricia
Willard L. Eccles Charitable Foundation
Williamson, John
Willis, Rebekah L.
Wilson, Sandra O.
Wright, Vivian R.
Yamada, Howard
Young, Donald

Legacy Society — Elevating philanthropy in Northern Nevada

Legacy Society members include a bequest to the Community Foundation in their will or trust. Donors determine which charities to include in their will or estate plan, and some include the *Community Endowment*. Their generosity is the catalyst for the Community Foundation's growth, and their actions inspire our community to care, connect, and engage.

Anonymous

Robert and Kerry Aguirre

Gary Aldax

Albert and Wendy Alderman

Elaine Alexander and Robert Moore

Christopher and Ann Askin

Peter and Theresa Bachstadt

Michael Marie Baxter

Jane Kimberly Becker

James Bell

Roger Bergmann

Janet Bingham

Mary Bioni

Doug and Deborah Blackman

Fred and Jane Boyd

Robert Broili

H. William Brooks

Ralph and Barbara Buscher

Sheilah Capurro

Julia Ratti and James Cavanaugh

Cameron Clarkson

Von and Kathleen Clemence

Donna Clontz and Norm Howard

Jim and Suzy Davenport

Shayne Del Cohen

Arthur and Shirley Di Salvo

Robert and Judy Dreiling

Regina Dunbar

Conrad and Kathy Evans

Karen Foissotte

Robert and Monica Hemsath

Judy Humphrey and Marc Whitten

Bruce and Nora James

David and Deedee Jenson

Reece and Tami Keener

Janet Laxalt

Gray and Terri Levy

Tom Livoti

Thomas and Sonja Louderback

Connie Mantini

Sheri Masini

Janice McCauley

Sue McIntosh and Steve Jones

Kevin and Ann Marie Melcher

Dieter and Heddy Meun

Kurt and Katie Neddenriep

Jim and Enid Oliver

Fred and Cheryl Olson

Nettie Oliverio

Alfred and Lola Ouska

Frank and Kay Partlow

Susanne Pennington

Rosalie Quesnoy

Alice Ramlow

Jack Randall

Ben and Susan Reed

Phil and Jennifer Satre

Bruce and Nancy Shipman

Patti Snyder

Larry and Colleen Struve

George and Arlene Summerhill

Amy Tirre

Lilli Trincherro

Henry and Stephanie Vanderleest

Maurice White

Roger and Mary Katherine Williams

Jill Winter

William and Vivian Wright

Linda Wyckoff

Remembered

Dr. Robin S. Ballantyne

Dave Bingham

Betty Kopfhammer

Paul M. Laxalt

Beth Miramon

Elizabeth Mollath

Rachel L. Mould

John Snyder

Jeff and Geneva Springmeyer

Nadine Stegelmeyer

*Donna Clontz and husband
Norm Howard support the
Senior Games personally and
through their Community
Foundation fund.*





Legacy member spotlight – Donna Clontz

Donna Clontz and her husband Norm Howard established the Clontz-Howard Legacy Fund in December 2016. This passionate and energetic couple advocates for seniors in our community. They have been involved with the Community Foundation Senior Support Fund, the City of Reno Foundation fundraising for the Senior Games, and the Caregiver Support Initiative.

After years of grassroots volunteer efforts, Donna and her husband wanted to help in a more organized and focused way. Because she values the knowledge, efficacy, and professionalism of the Community Foundation, she turned to the Foundation to set up her own fund. Their Legacy fund will advocate for seniors and women and support music performance and education.

Donna chairs the Reno Senior Citizen Advisory Committee, is a member of the Washoe County Senior Services Advisory Board and an AARP Nevada Ambassador. She also volunteers her time as a trainer for local juvenile justice programs and with Emerge Nevada, training women to run for public office.

CONNECT

We exist at the nexus of need and care.

The Community Foundation connects organizations, groups, and individuals in our community looking for support with organizations, groups, and individuals who are willing to give it. Think of us as a matchmaker for charitable givers and nonprofits in need — we aspire to make perfect and lasting connections.

Scholarships — Recognizing and supporting the promise of education

Our scholarships are as varied as our recipients, with donors creating funds to meet their personal objectives. These objectives often include honoring a loved one, rewarding an academic effort, or supporting a favorite school. Each scholarship has its own selection committee guided by the criteria established by the donor. See our website for the complete descriptions of each scholarship.

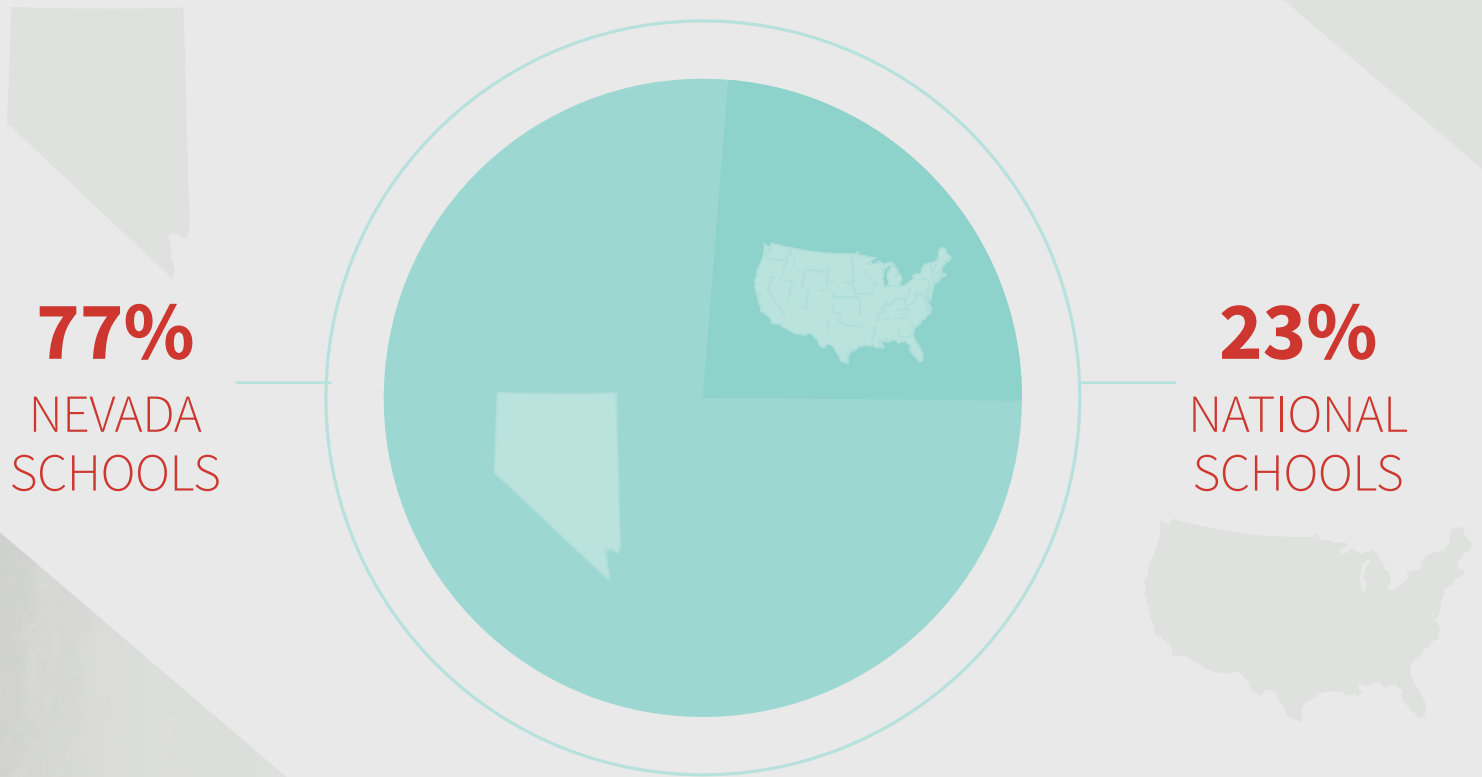


*Xena Delgado Almada,
Eugene and Nadine
Stegelmeyer Scholarship
recipient*



*Blain Jensen,
Reno and Gloria Quilici
Scholarship recipient*

DISTRIBUTION OF SCHOLARSHIPS



2016 SCHOLARSHIPS

388

APPLICATIONS

165

RECIPIENTS

22

SCHOLARSHIP FUNDS

\$374,000



Tanner Jones – Jack and Jane Becker Medical School Scholarship

Dr. John C. and Mrs. Jane Becker were well known to the Washoe County medical community and committed to providing medical services to rural Nevadans. Their daughter, Kim Becker, established a scholarship in their name for students majoring in pre-medical studies at the University of Nevada, Reno. It is fitting that 2016 recipient Tanner Jones was raised in Eureka and Fallon. This Churchill County High Valedictorian graduated from Brigham Young University-Hawaii with a degree in biochemistry. He worked as an analytical chemist in Denver before starting the University of Nevada, Reno School of Medicine. Tanner is married and enjoys volunteering with the ski patrol at Sky Tavern.



High Sierra Industries

Grant funding will support the analysis of the existing Career Development Academy's instructional material to determine impact on long-term employment for people with disabilities.

Northern Nevada

Literacy Council *received a Partnership Grant to obtain feedback from instructors, staff, and most importantly students, to measure the effectiveness of their literacy programs.*



Partnership Grants — Combined giving supports nonprofit needs

In 2016, the Partnership Grant program gave \$82,000 to six organizations provided by 21 donor-partners who believe in the power of combined giving. These organizations received grants to help strengthen their internal review and evaluation process, which was the focus of our 2016 Partnership Grants.

PARTNERSHIP GRANTS



Grants — Local donors helping local organizations

We are a Nevada-based organization committed to supporting our community and state, as well as fulfilling the wishes of our fund holders. We are proud to report that in 2016, 71% of all grants we administered stayed right here in the Silver State.

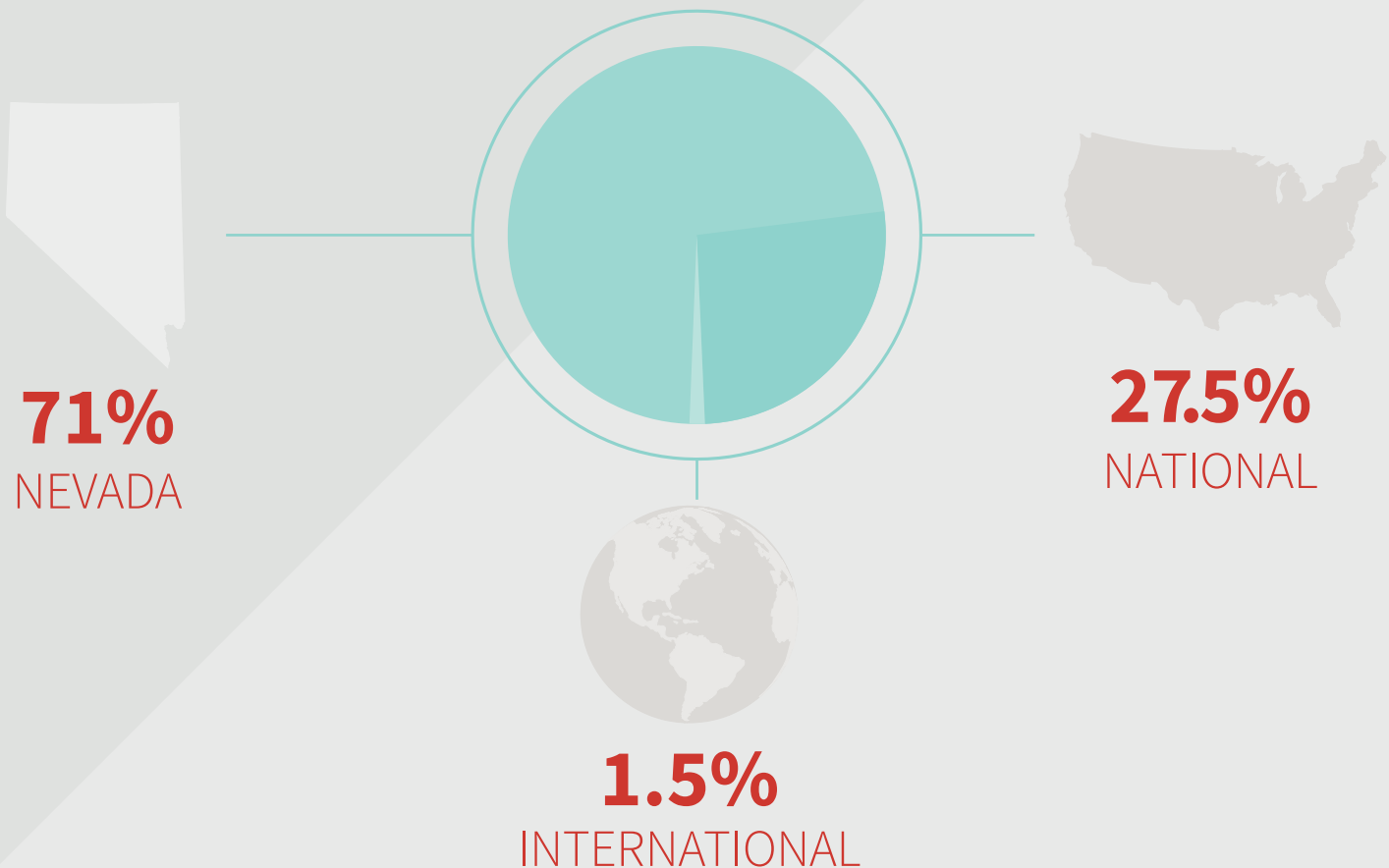
Canine Rehabilitation Center and Sanctuary — 2016 Grantee

This group works with “difficult” dogs, providing a refuge and second chance for those needing a new start. Dogs that enter the program are often victims of abuse, dog fighting, and laboratory research, as well as others that are severely neglected. Their work supports area rescue and shelter facilities, taking on the toughest adoption cases.

TOTAL GRANT MONIES ADMINISTERED

\$5,625,000

DISTRIBUTION OF INDIVIDUAL GRANTS



ENGAGE

Collaboration makes philanthropy possible and powerful.

The Community Foundation is an organization that works in partnership with others. In fact, that is the only way we can work. Nonprofits, businesses, government, and community members of every stripe have a stake in the strength and prosperity of our community. We help connect groups of diverse individuals to work together on community-wide challenges, build engagement, and develop long-term solutions for our most persistent problems.

Initiatives — Taking the lead in community problem-solving

We believe resident engagement will build a better community. The success of Community Foundation initiatives depends upon a high level of participation from residents and leaders in the region. When we pitch in and share responsibility for our community's well-being, we can increase the quality of life for generations of Nevadans.

Youth Network Initiative - You'N-I

The Youth Network Initiative addresses the needs of youth who are homeless, runaways, or aging out of foster care. In June 2016, the Community Foundation conducted a comprehensive evaluation of You'N-I to gauge initial and long-term successes and failures and to guide future Community Foundation initiatives to help youth who are homeless or at risk of becoming homeless.

Streetsmart 4 Youth

Streetsmart 4 Youth is designed to raise awareness of youth homelessness in Washoe County and contribute to organizations that support and advocate for them. Through table tents and posters in 38 participating restaurants, we educated community members about youth homelessness and invited them to add a buck to their bill to help address this issue. 2016 Streetsmart proceeds were distributed among the Eddy House, Planned Parenthood Mar Monte, The Ridge House, and Washoe County School District-Children in Transition Program.

Chef Maurice, owner of Nann and Kabob restaurant, is a passionate advocate for homeless and struggling youth. Shown here during an StreetSmart 4 Youth interview with the news media.



SURVEY RESULTS

Eddy House Survey

In 2016, the Community Foundation gathered data to help inform decision-making for our youth initiatives. Guests of the Eddy House were interviewed to gain knowledge about the perils homeless youth in our community face.

70%

of youth who visit the Eddy House report they feel safer on the streets than they did at home.



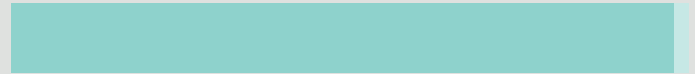
58%

of youth have exchanged sex or labor for food, shelter, or clothing.



93%

of the young people helped at the Eddy House have lost a parent, primary caregiver, or close friend.



39%

have been through our foster care systems.



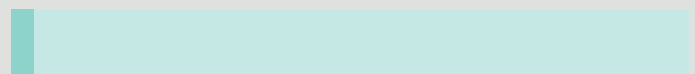
67%

are from Washoe County.



6%

are from rural Nevada.



A man in a dark suit and tie stands at a podium, holding a book titled "Family Estate Planning". He is addressing an audience, with the backs of several people's heads visible in the foreground. The scene is overlaid with a large, semi-transparent circular graphic. The background is a light, neutral color with a teal accent in the top left corner.

Community Education — Family Estate Planning Series

A Community Foundation partnership with KNPB made a free estate planning educational series possible for our community. Four times in 2016, community members received expert advice about wills, trusts, executors, healthcare directives, and other planning matters — free of charge. We are grateful to the expert presenters who volunteered their time: Linda Bowman, Ryan Earl, Mark Dreschler, Joe Gorman, Kurt Mische, Jason Morris, John Smith,

and Nicole Vance. Thank you to the Family Estate Planning 2016 sponsor organizations for bringing this important series to the community: American Heart Association, Boys and Girls Club, Children's Cabinet, Food Bank of Northern Nevada, Girl Scouts of the Sierra Nevada, KUNR, Nevada Land Trust, Renown, Salvation Army, TMCC, United Way, and Washoe County Library System.

FAMILY ESTATE PLANNING SERIES



MORE CHARITABLE
BEQUESTS TO HELP
OUR COMMUNITY.



Caregiver Support Initiative

The Community Foundation held two community-wide public meetings to help understand the needs and concerns of family caregivers to seniors in Washoe County. The information gained at these meetings is leading to increased support and resources for the caregiver community. A volunteer steering committee of 43 people formed to act on ideas generated at the public convenings to help more than 8,200 family caregivers in Washoe County.

Joanne McAfee summarizes her table's discussion about caregiving issues and the need for caregivers to be able to find the right resources during a Caregiver Support Initiative Convening at the Washoe County Senior Center.

Corporate Philanthropy Partners Program

The Community Foundation has worked to engage our professional community with philanthropy at the community level. In 2016, we launched The Corporate Philanthropy Partners Program, partnering with select businesses to help them find effective and meaningful ways to support their community.

The ten founding partners below have committed to these corporate social responsibility goals:

- Improve community for business, employees, and their families
- Engage employees
- Increase customer loyalty
- Protect and enhance company's reputation
- Create opportunities for business innovation and growth



CAREGIVER SUPPORT INITIATIVE



Board of Trustees



James Pfrommer,
*Chair, Trustee Executive
Committee, Nominating
Committee, Development
Committee, Professional
Advisor Council*



Teresa Mentzer,
*Board Vice-Chair, Trustee
Community Leadership
Committee Chair,
Development Committee,
Nominating Committee*



Gail Humphreys,
*Treasurer, Trustee Executive
Committee, Finance
Committee Chair, Rude
Supporting Foundation
Board member*



Matthew Gray,
*Secretary, Trustee
Executive Committee*



Tyson Cross,
*Trustee
Investment
Committee Chair*



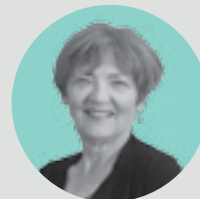
Steve Carrick,
*Trustee, Development
Committee Chair,
Finance Committee*



Leslie Daane,
*Trustee Audit
Committee Chair*



Rebecca Dickson,
*Trustee Stewardship
Committee*



Barbara Drake,
*Trustee Stewardship
Committee*



Thomas Hall Jr.,
*Immediate Past Chair,
Trustee Executive Committee,
Nominating Committee,
Professional Advisor Council*



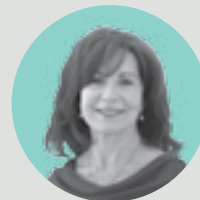
Nora James,
*Trustee, Marketing
Committee*



Craig King,
*Trustee, Marketing
Committee Chair*



Cary Lurie,
*Trustee, Stewardship
Committee*



Susanne Pennington,
*Trustee, Nominating
Committee Chair,
Stewardship Committee*



Alicia Reban,
*Trustee, Stewardship
Committee Chair*



Janice Rude-Willson,
*Trustee, Stewardship
Committee, Rude
Foundation Board Member*



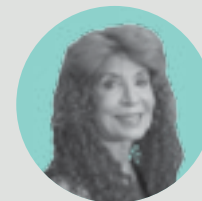
Beth Schuler,
*Trustee, Nominating
Committee Co-Chair,
Marketing Committee,
Development Committee*



Don Sefton,
*Trustee, Development
Committee*



Dave Stockman,
*Trustee, Community
Leadership Committee*



Lilli Trincherro,
*Trustee, Stewardship
Committee*

Advisory Board



Drew Aguilar



Dan Ahearn



Elaine Alexander



Julie Ardito



Carina Black



Nancy Brown



Steven Brown



Bill Creekbaum



Oscar Delgado



Devere Dressler



Bonnie Drinkwater



Edward Estipona



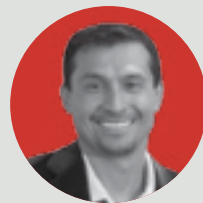
David Gamble



David Geddes



Kelly Glenn



Ray Gonzalez



Sy Johnson



Beau Keenan



Kerry Kozlowski



DJ Lee



Kevin Melcher



Michaelle Rafferty



Bonnie Read



Magali Rivera



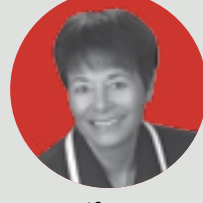
Nancy Rodriguez



Todd Plimpton



Michael Salogga



Jennifer Satre



Sig Wawdo

Professional Advisor Council Members

The Professional Advisor Council is a group of area professional advisors who work closely with the Community Foundation of Western Nevada. In partnering with us, they have referred clients and colleagues to the Community Foundation, attended events and are serving as charitable giving resources in their respective fields.

Attorneys

Soraya Aguirre,
Aguirre Riley, P.C.
Linda Bowman,
Law Offices of Linda Bowman
Gerald Dorn,
Anderson, Dorn & Rader
Gary M. Fuller,
Guild, Gallagher & Fuller
Julia Gold,
Law Offices of Julia Gold
Joe Gorman,
Joe Gorman Attorney at Law
Thomas J. Hall,
Law Office of Thomas J. Hall
Jack Hanifan,
Law Office of Jack R. Hanifan
Cassandra Jones,
Heritage Law Group
James Kalicki,
Kalicki Law Office, Ltd.
Ernest Maupin,
Maupin, Cox & LeGoy
Lance McKenzie,
McDonald Carano Wilson, LLP
Jason Morris,
Woodburn & Wedge
Gordon R. Muir,
Hawkins, Folsom & Muir
John Mulligan, Partner,
McDonald Carano Wilson, LLP

Jim Pace,
Sinai, Schroeder, Mooney, Boetsch,
Bradley & Pace
Todd Plimpton,
Belanger & Plimpton
Michaëlle Rafferty,
Maupin, Cox & LeGoy
Tim Riley
Don Ross,
Woodburn & Wedge
Robert M. Salyer,
Wilson Barrows Salyer Jones
F. DeArmond Sharp,
Robinson, Belaustegui, Sharp & Low
Steven Tackes,
Kaempfer Crowell Renshaw
Gronauer & Fiorentino
Sandra O. Wilson,
Law Offices of Sandra O. Wilson
Mark Winter,
Attorney at Law

CPAs

Drew Aguilar, CPA,
Carson Valley Accounting
Elaine Alexander, CPA
Ruth Gregory, CPA
Joe Lane, CPA
EideBailly
Edwin Pereyra, CPA
Jim Pfrommer, CPA,
Pfrommer & McCune, Ltd.
David Turner, CPA,
Turner, Loy and Co.
Richard Wait, CPA

Financial Advisors

Thomas Barcia,
Edward Jones
John Boyd,
Edward Jones
Bruce Brugler,
Tiedemann Wealth Management
John Dooley,
Edward Jones

Craig Libler,
Charles Schwab
Jim Marren,
Raymond James, Inc.
Janice McCauley,
Edward Jones
Enid Oliver,
Ameriprise Financial Advisor
Dick Reynolds,
Stifel Financial Corp
Jennifer Rust,
Edward Jones
Vicki Schultz,
Schultz Financial Group

Other Advisors

Rebecca Dickson,
Dickson Realty
Pete Parker,
NP Catalyst, Nonprofit Consultant
Gino Pascucci,
Premier Trust

Community Foundation Staff

Chris Askin, CSPG, CFRE,
President and CEO
Gay Brown, Accountant
Lyndsey Crossley,
Associate Program Officer
Ginny Harding-Davis,
Chief Advancement Officer
Sarah Jahr, Initiatives Associate
Felicia Ladson, Executive Assistant
Lauren Renda, Program Officer
Margaret Stewart,
Communications Director
Melissa Tschanz, CPA, Controller
Nick Tscheekar, Director of
Community Leadership

Financials

You may notice a trend in our financials — bigger pie slices, higher arrows, taller columns — in other words, serious growth. 2016 saw some strong gains, among them a doubling of gifts to our organization and 20% growth in Community Foundation assets. The beauty of all this robust activity is that as our charitable coffers grow, so does our ability to impact our community and make positive change possible.

CONSOLIDATED STATEMENT OF FINANCIAL POSITION

December 31, 2016 and 2015

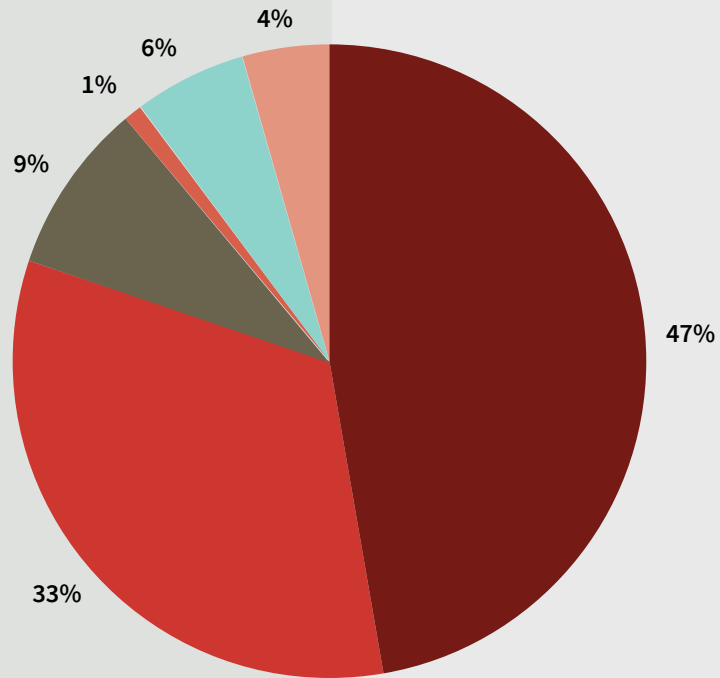
	2016	2015
Assets		
Cash and cash equivalents	\$15,800,200	\$10,901,633
Investments		
Current	58,676,869	49,281,831
Long-term	14,090,188	13,630,674
Other assets	2,050	13,276
Contributions receivable	879,123	130,919
Property and equipment, net	1,156,753	1,073,373
Investments held for		
split-interest agreements	<u>1,914,224</u>	<u>1,667,219</u>
Total Assets	<u>\$92,519,407</u>	<u>\$76,698,925</u>
Liabilities		
Accounts payable	\$2,055,961	\$295,538
Split-interest agreements	1,914,224	1,667,219
Accrued payroll	18,723	18,723
Grants payable	3,650,136	5,582,207
Funds held for others	<u>9,213,115</u>	<u>7,268,099</u>
Total Liabilities	<u>\$16,852,159</u>	<u>\$14,831,786</u>
Net Assets		
Unrestricted	\$35,402,326	\$29,753,405
Temporarily restricted	28,134,629	21,123,385
Permanently restricted	<u>12,130,293</u>	<u>10,990,349</u>
Total Net Assets	<u>\$75,667,248</u>	<u>\$61,867,139</u>
Total Liabilities and Net Assets	<u>\$92,519,407</u>	<u>\$76,698,925</u>

CONSOLIDATED STATEMENT OF ACTIVITIES

For the years ended December 31, 2016 and 2015

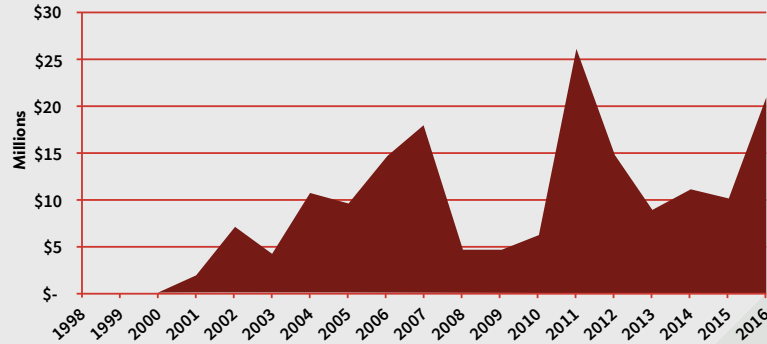
	2016	2015
Public support, revenue and transfers		
Contributions	\$20,921,319	\$10,029,210
Investment income, net	1,210,969	(1,346,068)
Rental income	108,726	125,726
Change in the value of		
split-interest agreements	(87,174)	(618,889)
Miscellaneous income	<u>341,977</u>	<u>367,556</u>
Total public support and revenue	22,495,817	8,557,535
Expenses		
Program services and grants	8,107,207	5,853,987
General and administrative	413,960	716,470
Fundraising	<u>174,541</u>	<u>217,424</u>
Total expenses	<u>8,695,708</u>	<u>6,787,881</u>
CHANGE IN NET ASSETS	13,800,109	1,769,654
Net assets at beginning of year	<u>61,867,139</u>	<u>60,097,485</u>
Net assets at end of year	<u>\$75,667,248</u>	<u>\$61,867,139</u>

ASSETS BY FUND CLASS



Donor Advised	\$43,764,000	47%
Designated	30,587,000	33%
Endowments	8,040,000	9%
Funds Held for Others	901,000	1%
Scholarships	5,271,000	6%
Area of Interest	4,067,000	4%
	<u>\$92,630,000</u>	

GIFTS RECEIVED



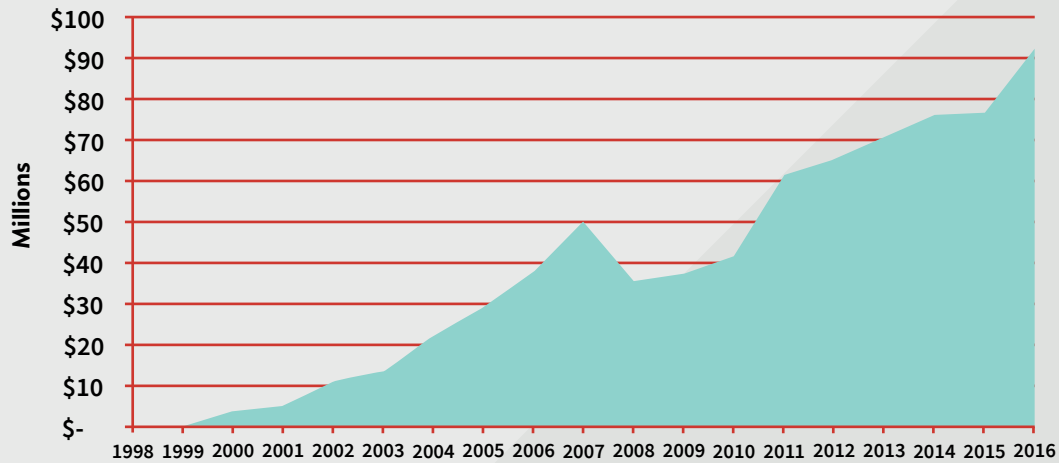
2001	\$1,889,000	2009	\$4,713,000
2002	\$7,098,000	2010	\$6,379,000
2003	\$4,284,000	2011	\$26,142,000
2004	\$10,667,000	2012	\$14,749,000
2005	\$9,586,000	2013	\$9,019,000
2006	\$14,589,000	2014	\$11,193,000
2007	\$17,968,000	2015	\$10,133,000
2008	\$4,700,000	2016	\$21,048,000

GRANTS AWARDED



1999	\$1,698,000	2008	\$4,294,000
2000	\$1,338,000	2009	\$10,573,000
2001	\$364,000	2010	\$5,938,000
2002	\$577,000	2011	\$11,705,000
2003	\$2,606,000	2012	\$5,904,000
2004	\$4,641,000	2013	\$7,019,000
2005	\$3,799,000	2014	\$8,984,000
2006	\$7,781,000	2015	\$5,801,000
2007	\$7,851,000	2016	\$5,999,000

ASSETS IN TOTAL



1999	\$577,000	2008	\$36,036,000
2000	\$4,351,000	2009	\$37,776,000
2001	\$5,462,000	2010	\$41,945,000
2002	\$11,061,000	2011	\$61,673,000
2003	\$13,967,000	2012	\$65,539,000
2004	\$22,343,000	2013	\$71,703,000
2005	\$29,381,000	2014	\$76,213,000
2006	\$38,264,000	2015	\$76,835,000
2007	\$50,256,000	2016	\$92,630,000

Looking Forward — Exciting work ahead, made possible by you

In 2016, the Community Foundation went through the strategic planning process. Not only did this process enable us to lay a path for the future success of the Community Foundation, it helped us assess what we have accomplished well and how we can improve. This plan helped us clarify priorities and goals for 2017 and got us excited about the possibilities. Here's a peek at what we plan to do in the coming year.

- Increase community involvement and interaction by soliciting suggestions for our next Community Leadership initiative — ask the community, “What’s Your Big Idea?”
- Engage the public more broadly by holding a community-wide meeting on topics of wide-spread and timely importance.
- Produce valuable community resources based on ideas generated at the Caregiver Support Initiative convenings. These include WashoeCaregiver.org – an online directory of local services that help caregivers; and the Washoe Caregiver Guide – an introduction to family caregivers to be distributed by hospital discharge planners, community centers, and other outlets.
- Expand the Corporate Philanthropy Partners program, collaborating with local corporate leaders to increase their company’s community impact, help address their needs, and increase recognition of their efforts.

- Distribute the first grants from the Community Endowment investment earnings.
- Assess results of the feasibility study completed on Community Endowment fundraising, which will enable us to grow the endowment significantly and make a more significant impact on our community in perpetuity.

All Community Foundation efforts are designed to strengthen our community and deepen your connection to it. By connecting people with the causes that resonate with them, we can solve challenges, promote prosperity, instill pride, build community, and inspire others to get involved. Thank you for being part of your community and for supporting your Community Foundation.

Ten reasons people choose to give through the Community Foundation of Western Nevada.

1. We are a local organization with deep roots in the community.
2. You can feel confident about your grants.
Ask our expert staff to research charities and grant opportunities for you.
3. You receive highly personalized service tailored to your unique charitable and financial interests.
4. Your donor advised funds help you invest in the causes you care about most.
5. We accept a wide variety of assets and can facilitate even the most complex forms of giving.
6. We partner with professional advisors to create highly effective approaches to charitable giving.
7. You receive maximum tax advantages.
8. The impact of your charitable dollars can be multiplied by pooling them with other grants.
9. We build endowment funds that benefit the community forever and help create personal legacies.
10. Join a community leader. Community Foundation initiatives bring people together to improve our community.



Care

We work together to build a more close knit, more livable, more lovable community.



Connect

We bring the right people together with the best intentions on serving our community, fostering even bigger opportunities.



Engage

We are actively involved as a solutions-minded partner, seeking results that are beneficial to all.



**COMMUNITY
FOUNDATION**
of Western Nevada



**COMMUNITY
FOUNDATION**
of Western Nevada

50 Washington Street, Suite 300
Reno, NV 89503-5660
775.333.5499 • nevadafund.org

**Taking a look back to
make the leap forward.**